

## Getting to the CID office



It is very easy to get to the CID office from Central Station.



Look for signs to **South Concourse**. That is the closest exit to the office.



At the South Concourse take the exit to “Chalmers Street”. You need to go up the escalator or the stairs.



There is also a lift.

Do **not** go through the long tunnel.

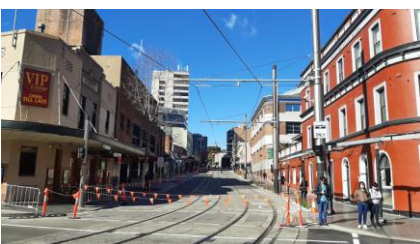
That is the wrong way.



There are 2 streets just outside the station.

You need to cross them both.

They are called Randle Street and Chalmers Street.



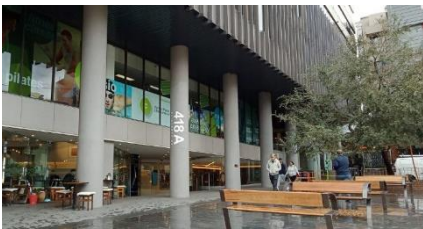
Devonshire Street is the street going away from Central Station.

Walk up that street.



You need to cross Elizabeth Street.

The CID office is in the tall building at the corner of Devonshire Street and Elizabeth Street.



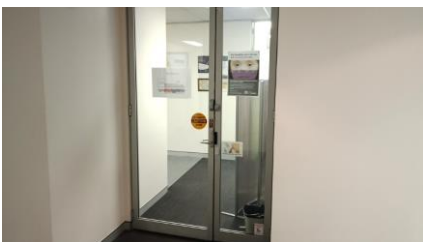
The door is on Devonshire Street.

The street number is 418A.



Take the lift up to level 2.

Go left when you get out of the lift.



The CID office is at the end of the hallway.

Welcome to CID!

